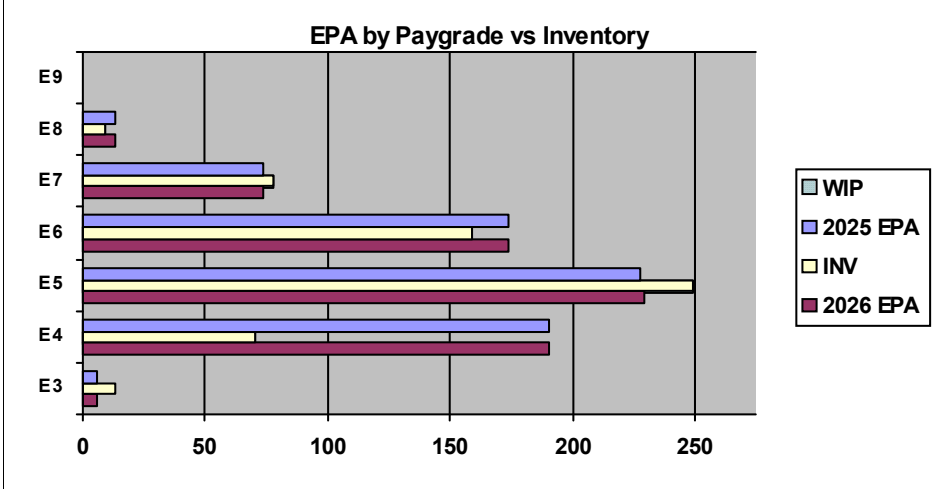
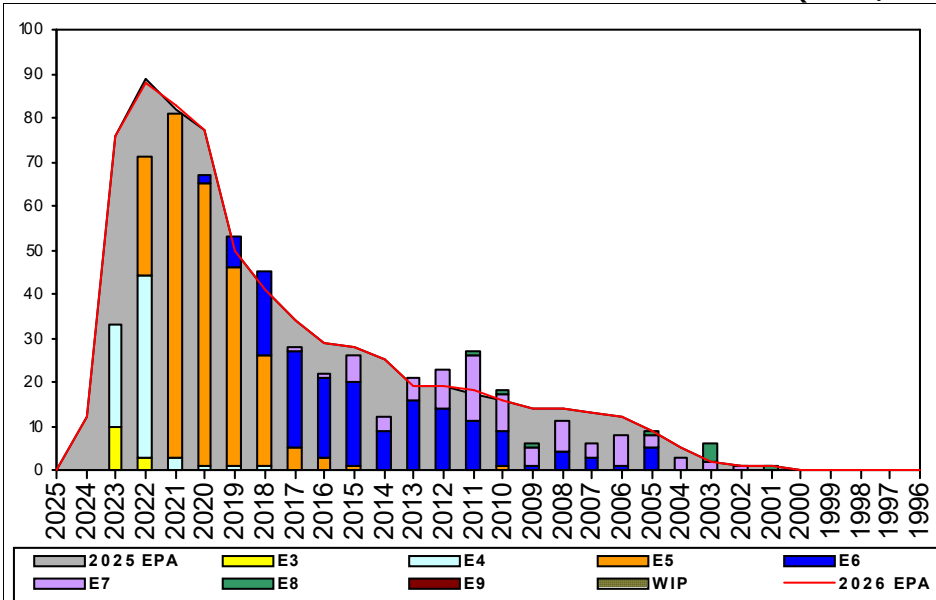


## CTI (East/Far East) - B512



	E1-3	E4	E5	E6	E7	E8	E9	TOTAL
% INV to FY25 EPA	217%	37%	109%	91%	105%	69%		84%
EPA (FY25)	6	190	228	174	74	13		685
INVENTORY	13	70	249	159	78	9		578
EPA (FY26)	6	190	229	174	74	13		686
% INV to FY26 EPA	217%	37%	109%	91%	105%	69%		84%
INV +WIP / FY25 EPA								
INVENTORY			← E-3 and Below WIP					
INV +WIP / FY26 EPA								

Sea Shore Flow		
TOUR	SEA	SHORE
1ST		
2ND		
3RD		
4TH		
5TH		
6TH		
7TH		

FORCE STRUCTURE MANNING TO BA									
PG	SEA	INV	BA	SHORE	INV	BA	SEA + SHORE	TOTAL INV	TOTAL BA
E1-3	#Div/0!	1		#Div/0!	7		#Div/0!	8	
E4	43.8%	7	16	37.5%	63	168	38.0%	70	184
E5	64.9%	24	37	118.0%	210	178	108.8%	234	215
E6	147.6%	31	21	82.5%	118	143	90.9%	149	164
E7	110.5%	21	19	110.0%	55	50	110.1%	76	69
E8	#Div/0!	2		46.7%	7	15	60.0%	9	15
E9									
Total	92.5%	86	93	83.0%	460	554	84.4%	546	647

### ADV OPP. (Cycles 261/262/264)

Pay Grade	E1-3	E4	E5	E6	E7	E8	E9
All-Navy	TIR	TIR	18.54	10.62%	31.44%	21.60%	22.32%
CTI	TIR	100.0%	76.1%	100.0%	40.9%	34.4%	0.0%

### Zone Info

	ZONE A	ZONE B	ZONE C	ZONE D	ZONE E	ALL ZONES
FY25 Manning:	83.0%	89.0%	92.0%	72.0%	94.0%	84.0%
FYTD RENL Rate:	68.4%	66.7%	84.6%	100.0%	75.0%	74.4%
FY26 Manning:	83.0%	89.0%	92.0%	71.0%	94.0%	84.3%

### NOTES

CHINESE \*\*\*ZONE A/B/C SRB available\*\*\* Please take advantage while we have it.

- Overall CMN manning is at 87% (INV/BA).

KOREAN \*\*\*ZONE A SRB now available!\*\*\* Please take advantage while we have it.

- Overall KOR manning is at 99% (INV/BA).

- We will always need more KORLINGS than BA due to the short tours in Korea.

- Have you been to Korea?

\*\*\*Billets are being coded for INT/ADV NECs, recommend updating your MNA searches and reaching out to the detailers for further information.\*\*\*

Rating conversions will be considered on a case-by-case basis.

The TECHAD is available at 901-874-2653 for questions.